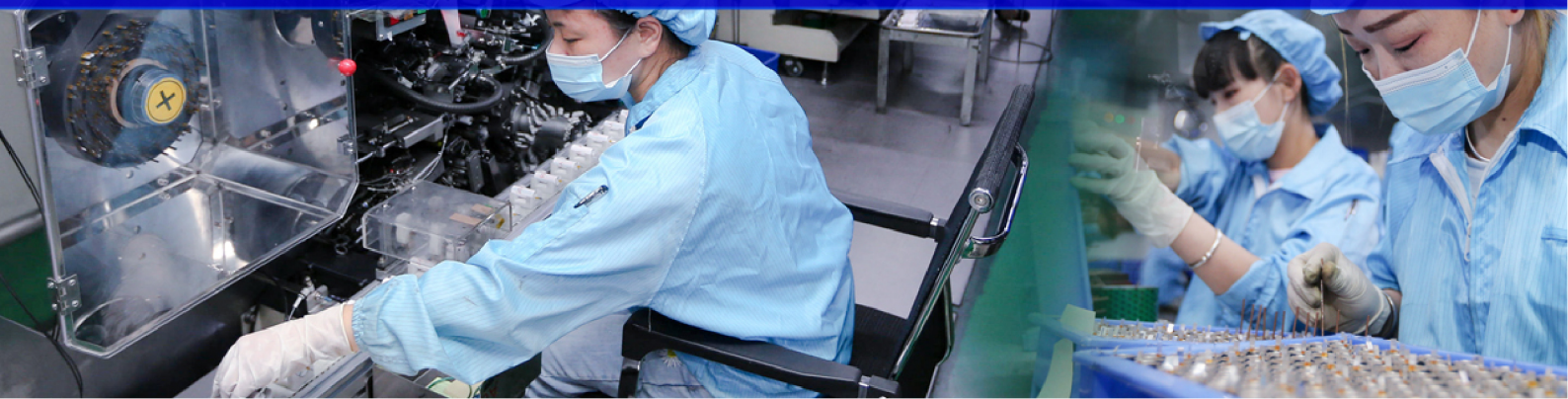




**2024**

# PRODUCT CATALOGUE BROCHURE







POWERSTABILITY  
SAFETY & RELIABLE

Hi,

POWERSTABILITY team was established in 2000, focusing on the research and development of high-performance lithium batteries and its extension products, currently sold to more than 60 countries around the world, with low price and the pursuit of safety and stability characteristics recognized by most customers. In 2020, POWERSTABILITY team created its official website and focused on Lithium Sulfite (Li-SOCl<sub>2</sub>)/Lithium Sulfur (Li-SO<sub>2</sub>Cl<sub>2</sub>) batteries for extreme environments, launching DD CELLS and related batteries for downhole, MWD, P.I.G applications. This type of batteries can work at a stable operating temperature of 150°C and have never had a single safety incident, including explosion, combustion, etc. in the past three years. In 2022, POWERSTABILITY set up a well as production center in China, R&D center and oth



# Hi-Temperature

Application: Aerospace, Medical, Military, Oceanographic

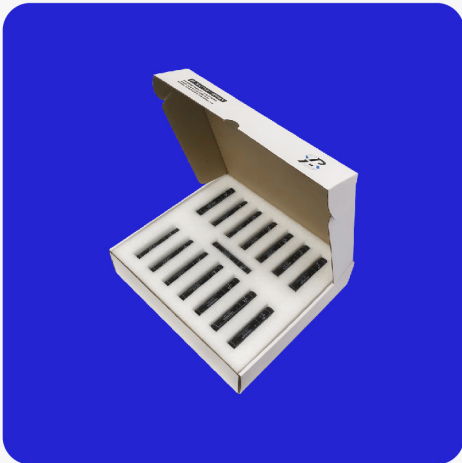
Downhole Application/MWD TOOLS/Pipeline Inspection Gauge/DATA LOGGER

Non-rechargeable batteries continue to offer power solutions for applications that don't have ready access to a generating source or limitations in the device being powered. Long shelf life couple with wide operating temperatures make POWER STABILITY cells well suited for applications such as soldier power, emergency locator transmitters and environment sensors. In addition, unique requirements for high temperature sterilization tolerances for medical equipment to high vibration/shock designs for aerospace applications are met with POWER STABILITY's chemistry and cell designs.

Model	Chemistry	Cell Size	Open Voltage	Capacity	Max Temp (°C)	Diameter (mm)	Height (mm)
ER10450S	Li/SOCI2	AAA	3.6V	0.6Ah	+150°C	10.4mm	45.3mm
ER14250S	Li/SOCI2	1/2AA	3.6V	0.7Ah	+150°C	14.5mm	25.5mm
ER14505S	Li/SOCI2	AA	3.6V	1.6Ah	+150°C	14.5mm	50.5mm
ER17100S	Li/SOCI2	--	3.6V	5.5Ah	+150°C	17.5mm	100.5mm
ER18505S	Li/SOCI2	--	3.6V	3.2Ah	+150°C	18.7mm	50.5mm
ER20100S	Li/SOCI2	--	3.6V	9Ah	+150°C	20.7mm	101.6mm
ER26500S	Li/SOCI2	C	3.6V	5.5Ah	+150°C	26.2mm	50.5mm
ER34615S	Li/SOCI2	D	3.6V	13.0Ah	+150°C	34.5mm	61.5mm
ER321260S	Li/SOCI2	DD	3.6V	28.0Ah	+150°C	32.4mm	126.5mm
ER341245S	Li/SOCI2	DD	3.6V	28.0Ah	+150°C	34.5mm	127.0mm
ER261020S	Li/SOCI2	CC	3.6V	13.0Ah	+150°C	26.2mm	102.0mm



# Hi-Temperature Packaging display

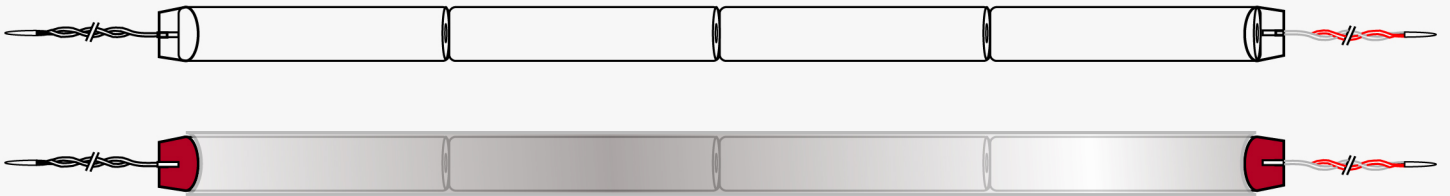




# Hi-Temperature Battery Pack

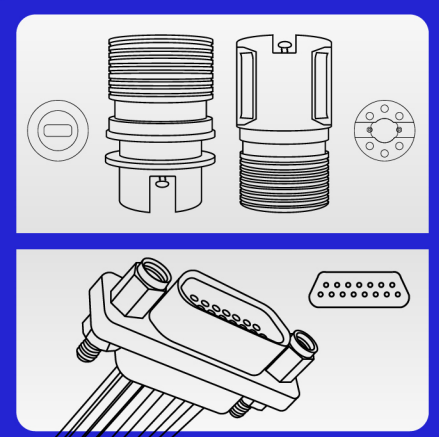
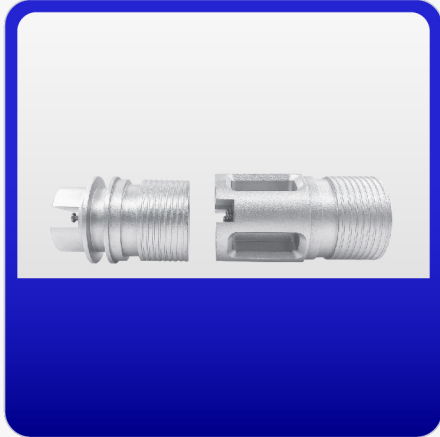
Application: Downhole Application/MWD TOOLS/  
Pipeline Inspection Gauge

**APS**



Model	Chemistry	Cell Size	Open Voltage	Capacity	Max Temp (°C)	Diameter (mm)	Height (mm)
ER20100S	Li/SOCI2	--	3.6V	9.0Ah	+150°C	20.7mm	101.6mm
ER34615S	Li/SOCI2	D	3.6V	13.0Ah	+150°C	34.5mm	61.5mm
ER321260S	Li/SOCI2	DD	3.6V	28.0Ah	+150°C	32.4mm	126.5mm

# Hi-Temperature Battery Pack - Accessory

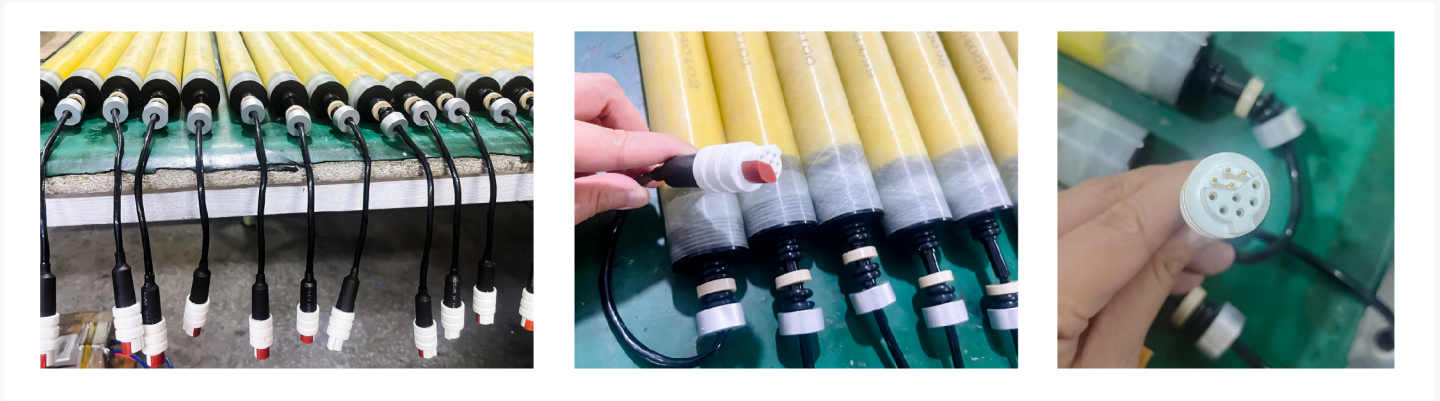
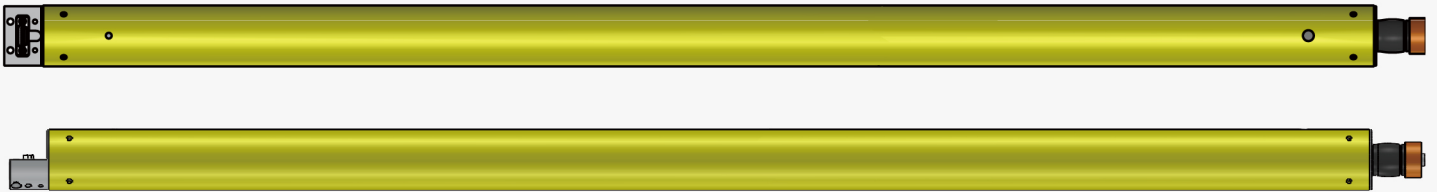






# Hi-Temperature Battery Pack

**MWD**



Model	Chemistry	Cell Size	Open Voltage	Capacity	Max Temp (°C)	Diameter (mm)	Height (mm)
ER34615S	Li/SOCI2	D	3.6V	13.0Ah	+150°C	34.5mm	61.5mm
ER321260S	Li/SOCI2	DD	3.6V	28.0Ah	+150°C	32.4mm	126.5mm



# ENERGY TYPE

**Application: Aerospace, Medical, Military, Oceanographic**

**Downhole Application/MWD TOOLS/Pipeline Inspection Gauge/DATA LOGGER**

- (1) Bobbin Type, high capacity, shelf life is ten years;
- (2) Wide operating temperature range, -55 °C~+85°C;
- (3) Smooth voltage level, 90% capacity could be outputted at a high level.

Non-rechargeable batteries continue to offer power solutions for applications that don't have ready access to a generating source or limitations in the device being powered. Long shelf life couple with wide operating temperatures make POWER STABILITY cells well suited for applications such as soldier power, emergency locator transmitters and environment sensors. In addition, unique requirements for high temperature sterilization tolerances for medical equipment to high vibration/shock designs for aerospace applications are met with POWER STABILITY's chemistry and cell designs.

Model	Chemistry	Cell Size	Open Voltage	Capacity	Max Temp (°C)	Diameter (mm)	Height (mm)
ER34615H	lithium thionyl chloride	D	3.6V	19Ah	+85°C	34.2mm	61.5mm
ER26500H	lithium thionyl chloride	C	3.6V	9.0Ah	+85°C	26.2mm	50.5mm
ER14335H	lithium thionyl chloride	2/3AA	3.6V	1.65Ah	+85°C	14.5mm	33.5mm
ER14505H	lithium thionyl chloride	AA	3.6V	2.7Ah	+85°C	14.5mm	50.5mm
ER14250H	lithium thionyl chloride	1/2AA	3.6V	1.2Ah	+85°C	14.5mm	25.4mm
ER18505H	lithium thionyl chloride	--	3.6V	4.0Ah	+85°C	18.5mm	50.5mm





# POWER TYPE

**Application: Aerospace, Medical, Military, Oceanographic**

**Downhole Application/MWD TOOLS/Pipeline Inspection Gauge/DATA LOGGER**

- (1) High discharge rate, and you can always consult our engineer for an even higher discharge rate;
- (2) Have large continuous or pulse current and considerable power output for over five years;
- (3) Lower resistance, smooth voltage level.

Non-rechargeable batteries continue to offer power solutions for applications that don't have ready access to a generating source or limitations in the device being powered. Long shelf life couple with wide operating temperatures make POWER STABILITY cells well suited for applications such as soldier power, emergency locator transmitters and environment sensors. In addition, unique requirements for high temperature sterilization tolerances for medical equipment to high vibration/shock designs for aerospace applications are met with POWER STABILITY's chemistry and cell designs.

Model	Chemistry	Cell Size	Open Voltage	Capacity	Max Temp (°C)	Diameter (mm)	Height (mm)
ER14335M	lithium thionyl chloride	2/3AA	3.6V	1.3Ah	+85°C	14.5mm	33.5mm
ER14250M	lithium thionyl chloride	1/2AA	3.6V	1.0Ah	+85°C	14.5mm	25.4mm
ER14505M	lithium thionyl chloride	AA	3.6V	2.2Ah	+85°C	14.5mm	50.5mm
ER18505M	lithium thionyl chloride	--	3.6V	3.2Ah	+85°C	18.5mm	50.5mm
ER34615M	lithium thionyl chloride	D	3.6V	14.5Ah	+85°C	34.0mm	61.5mm
ER26500M	lithium thionyl chloride	C	3.6V	6.5Ah	+85°C	26.2mm	50.5mm